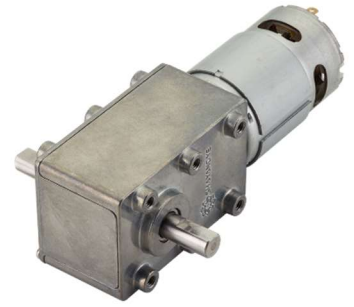


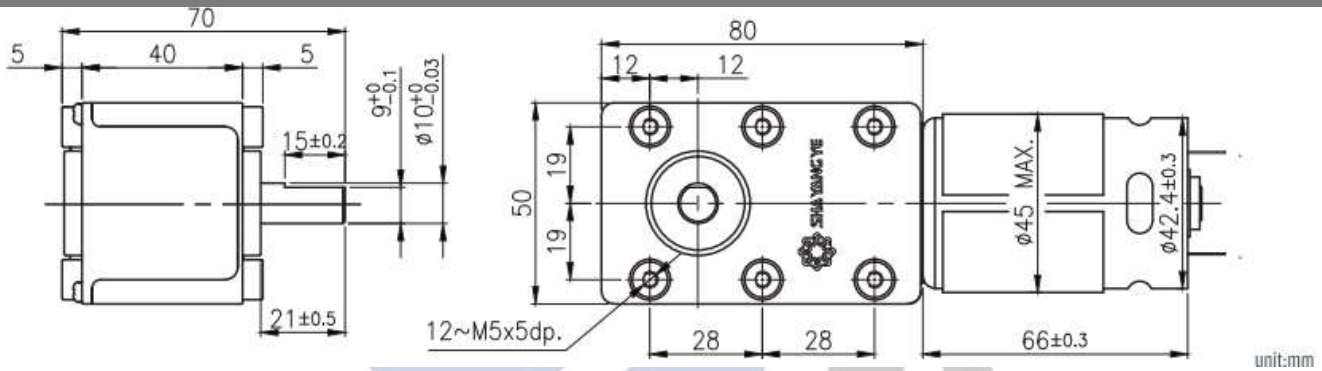
## WG-50GM

### 01&02 TYPE



Appearance Size

Single output or dual output shaft both are available



### Geared Motor Torque & Speed

		1/50	1/75	1/100	1/120	1/200	1/350	1/600	1/700	1/1050
12V	減速比 Reduction ratio	1/50	1/75	1/100	1/120	1/200	1/350	1/600	1/700	1/1050
	定格扭力 Rated torque (kg-cm)	6.1	9.1	12.2	14.6	24.4	30	40	40	40
24V	定格轉數 Rated speed (rpm)	77	51.3	38.5	32	19.3	11	6.4	5.5	3.7
	定格扭力 Rated torque (kg-cm)	5.6	8.4	11.2	13.4	22.4	30	40	40	40
24V	定格轉數 Rated speed (rpm)	77.8	51.9	38.9	32.4	19.5	11.1	6.5	5.6	3.7
	軸心迴轉方向 Rotation direction	CCW					CW			

### Product Specification

外觀材質 Housing material	輸出軸承型式 Bearing at output	徑向負荷 Radial load (10mm from flange)	軸向負荷 Shaft axial load	主軸最大承受壓力 Shaft press fit force, max.	徑向間隙 Radial play of shaft	軸向間隙 Thrust play of shaft	背隙 (無負荷時) Backlash, at no-load	重量 Weight (g)
金屬 Metal	滾珠軸承 Ball bearings	≤ 20kgf	≤ 10 kgf	≤ 30 kgf	≤ 0.04 mm	≤ 0.3mm	≤ 3°	490

### Motor Data

定格電壓 Rated volt (V)	定格扭力 Rated torque (g-cm)	定格轉數 Rated speed (rpm)	定格電流 Rated current (A)	無負荷轉數 No load speed (rpm)	無負荷電流 No load current (A)	定格出力 Rated output (W)	重量 Weight (g)
12	610	3850	≤ 2.8	4600	≤ 0.65	24.2	360
24	560	3890	≤ 1.3	4600	≤ 0.3	22.3	360

### Motor Characteristics

